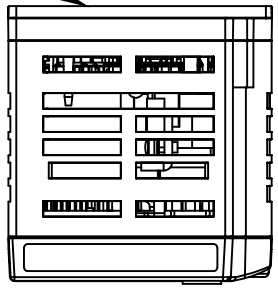
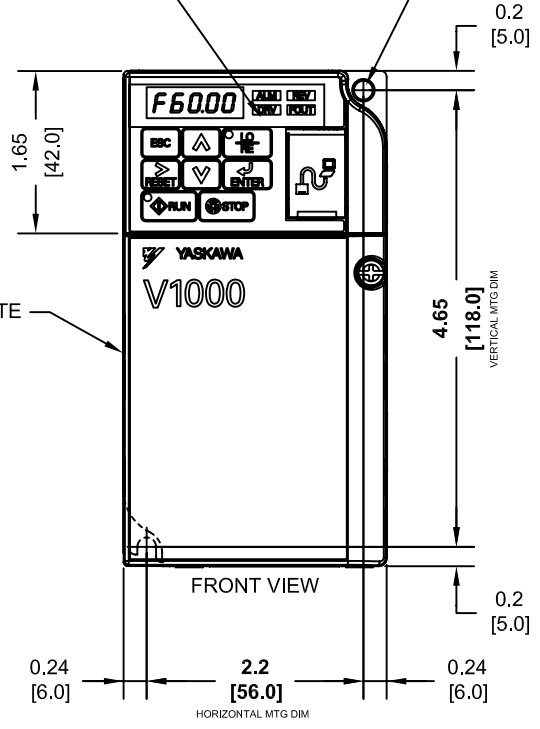


FINLESS HEATSINK

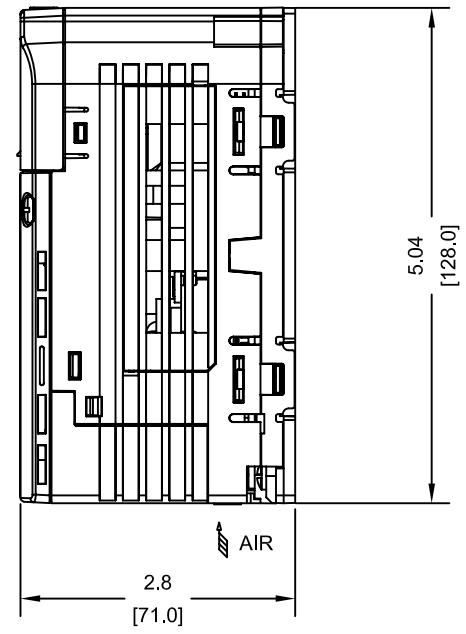


DIGITAL OPERATOR

(2)-MOUNTING HOLES FOR #8 [M4] SCREWS



AIR



NAMEPLATE

FRONT VIEW

0.2 [5.0]

0.24 [6.0] 2.2 [56.0] 0.24 [6.0]

HORIZONTAL MTG DIM

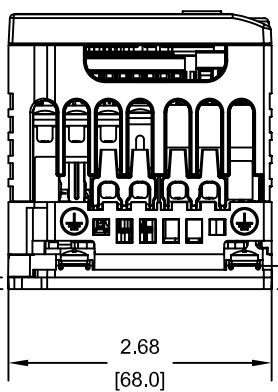
4.65 [118.0]

VERTICAL MTG DIM

5.04 [128.0]

2.8 [71.0]

AIR



0.12 [3.0]

2.68 [68.0]

(GND TERM)

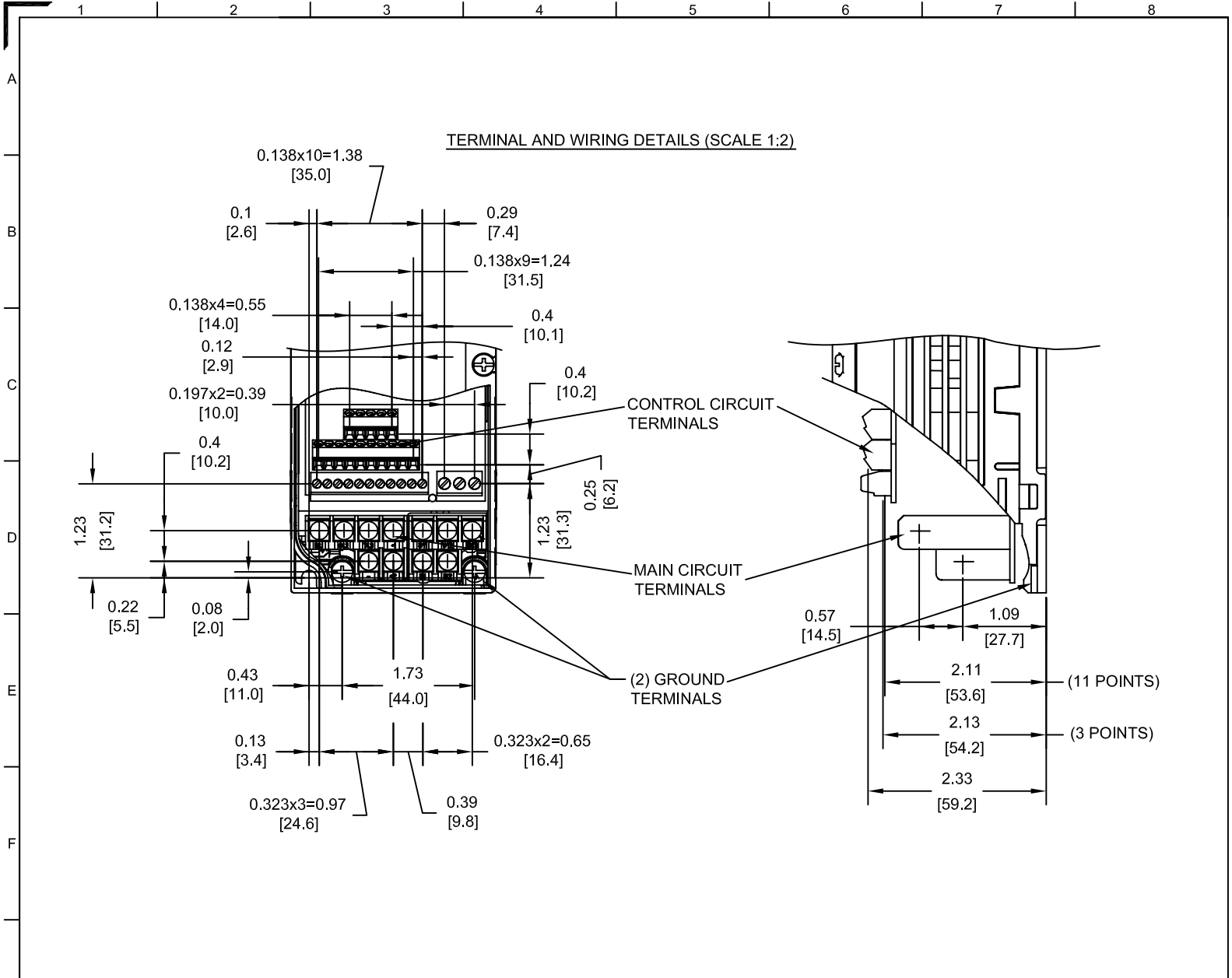
MODEL # CIMR-VU	VOLTAGE (VAC)	OUTPUT CURRENT (A)		WEIGHT LBS (Kg)	HEAT LOSS (W)					
		ND	HD		ND (Fc=2kHz)			HD (Fc=8kHz)		
					INT	EXT	TOT	INT	EXT	TOT
BA0001JXX	208/240	1.2	0.8	1.3 (0.6)	8.5	5.0	13.5	7.4	4.3	11.7
BA0002JXX	SINGLE-PHASE	1.9	1.6	1.3 (0.6)	9.7	7.6	17.3	8.9	7.9	16.8
2A0001JXX		1.2	0.8	1.3 (0.6)	8.0	5.0	13.0	7.3	4.3	11.6
2A0002JXX	THREE-PHASE	1.9	1.6	1.3 (0.6)	9.5	7.6	17.1	8.8	7.9	16.7
2A0004JXX		3.5	3.0	1.5 (0.7)	13.6	15.8	29.4	11.5	16.2	27.7
2A0006JXX		6.0	5.0	1.5 (0.7)	17.2	27.5	44.7	15.9	27.4	43.3

NOTE:
XX DENOTES AA-ZZ

INT=INTERNAL COMPONENTS
EXT=EXTERNAL HEATSINK
TOT=TOTAL

FOR ADDITIONAL DETAILS AND SPECIFICATIONS, CONSULT MANUAL

TOLERANCES / REFERENCES:		<p>YASKAWA The Drive for Quality™</p> <p>THIS DOCUMENT AND INFORMATION CONTAINED IN IT ARE CONFIDENTIAL, AND CANNOT BE COPIED OR DISCLOSED IN WHOLE OR IN PART WITHOUT THE EXPRESS WRITTEN CONSENT OF YASKAWA ELECTRIC AMERICA INC.</p>	DRAWN: J. MATTAS DATE 1-5-09	DATE 1-5-09	TITLE: V1000 DIMENSION DRAWING FRAME SIZE 1 FINLESS HEATSINK BA0001J, BA0002J, 2A0001J TO 0006J	
UNITS: IN [mm]	SCALE: 1:2		CHECKED: J. PIOTROWSKI DATE 4-28-09	DATE 4-28-09		SIZE A
		APPROVED: T. SASADA DATE 7-8-09	DATE 7-8-09	DRAWING #: DD.V1K.FR1.FNL.01		



TERMINAL AND WIRE SPECIFICATIONS FOR
MAIN CIRCUIT AND GROUND

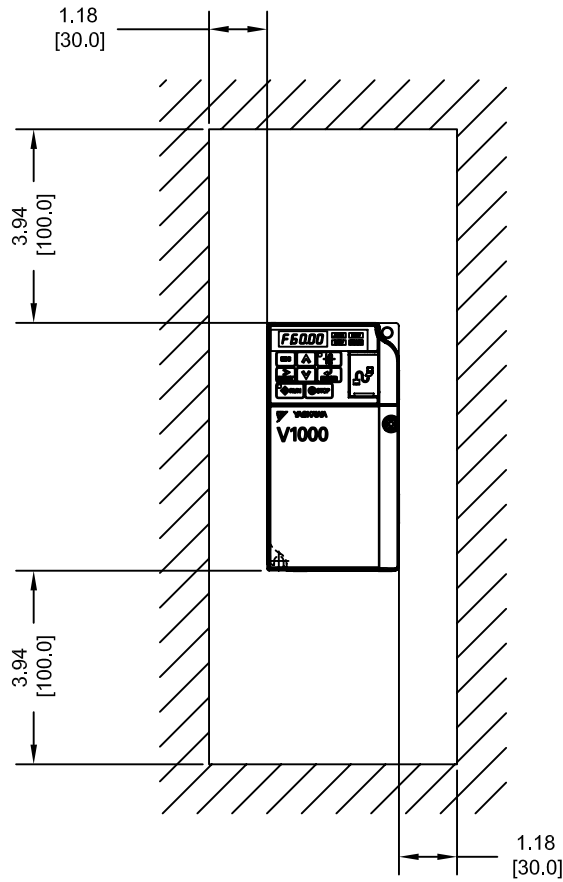
MODEL # CIMR-VU	TERMINAL SCREW	CLAMPING TORQUE lb.in.(N.m.)	WIRE RANGE AWG(mm ²)
BA0001J	M3.5	7.1 TO 8.9 (0.8 TO 1.0)	22-14 (0.33-2.0)
BA0002J	M3.5	7.1 TO 8.9 (0.8 TO 1.0)	22-14 (0.33-2.0)
2A0001J	M3.5	7.1 TO 8.9 (0.8 TO 1.0)	22-14 (0.33-2.0)
2A0002J	M3.5	7.1 TO 8.9 (0.8 TO 1.0)	22-14 (0.33-2.0)
2A0004J	M3.5	7.1 TO 8.9 (0.8 TO 1.0)	22-14 (0.33-2.0)
2A0006J	M3.5	7.1 TO 8.9 (0.8 TO 1.0)	22-14 (0.33-2.0)

NOTE: RATINGS APPLY TO BOTH FACTORY AND FIELD WIRING
REFER TO APPLICABLE CODES FOR PROPER WIRE TYPE AND SIZE

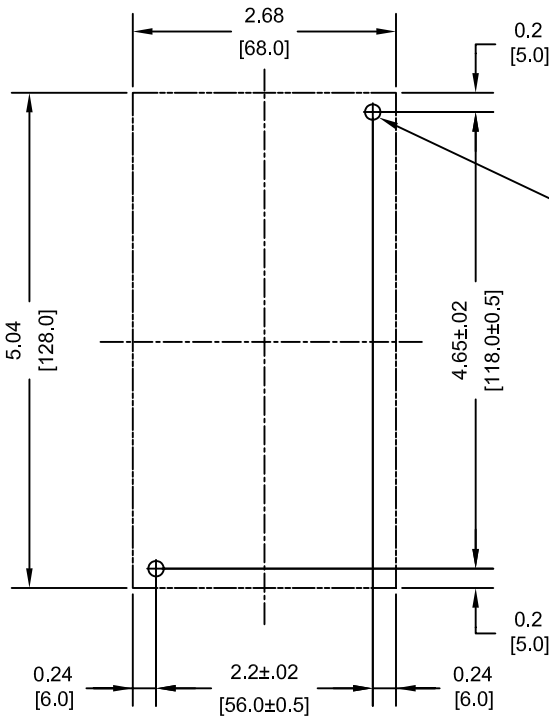
FOR ADDITIONAL DETAILS AND SPECIFICATIONS, CONSULT MANUAL

TOLERANCES / REFERENCES: UNITS: IN[mm] SCALE: BY VIEW	<p>YASKAWA The Drive for Quality™</p> <p><i>THIS DOCUMENT AND INFORMATION CONTAINED IN IT ARE CONFIDENTIAL, AND CANNOT BE COPIED OR DISCLOSED IN WHOLE OR IN PART WITHOUT THE EXPRESS WRITTEN CONSENT OF YASKAWA ELECTRIC AMERICA INC.</i></p>	DRAWN: J. MATTAS	DATE 1-5-09	TITLE: V1000 DIMENSION DRAWING FRAME SIZE 1 FINLESS HEATSINK BA0001J, BA0002J, 2A0001J TO 0006J SIZE: A REVISION: R00 PAGE: 2 of 3 DRAWING #: DD.V1K.FR1.FNL.01
	CHECKED: J. PIOTROWSKI	DATE 4-28-09		
	TECH: J. CAIRO	DATE 7-7-09		
	APPROVED: T. SASADA	DATE 7-8-09		
	ORIGINAL DESIGN: -	DATE -		

MINIMUM INSTALLATION CLEARANCES (SCALE 1:4)



MOUNTING DIMENSIONS (SCALE 1:2)



(2)-MOUNTING HOLES FOR #8[M4] SCREWS

NOTES:

1. MOUNTING PLATE PROPERTIES
 - FLATNESS SHALL NOT EXCEED 0.2mm
 - ROUGHNESS SHALL NOT EXCEED 25S
 - TEMP. SHALL NOT EXCEED 90C (194F)
2. APPLY THERMAL COMPOUND BETWEEN HEATSINK AND MOUNTING PLATE.
3. MOUNTING SCREW TORQUE
 - 1.0-1.3 Nm (0.74-0.96 ft-lbf)
4. SEE MANUAL FOR COMPLETE DETAILS

TOLERANCES / REFERENCES:



THIS DOCUMENT AND INFORMATION CONTAINED IN IT ARE CONFIDENTIAL, AND CANNOT BE COPIED OR DISCLOSED IN WHOLE OR IN PART WITHOUT THE EXPRESS WRITTEN CONSENT OF YASKAWA ELECTRIC AMERICA INC.

DRAWN:	J. MATTAS	DATE:	1-5-09
CHECKED:	J. PIOTROWSKI	DATE:	4-28-09
TECH:	J. CAIRO	DATE:	7-7-09
APPROVED:	T. SASADA	DATE:	7-8-09
ORIGINAL DESIGN:	-	DATE:	-

TITLE:		
V1000 DIMENSION DRAWING		
FRAME SIZE 1		
FINLESS HEATSINK		
BA0001J, BA0002J, 2A0001J TO 0006J		
SIZE	REVISION	PAGE
A	R00	3 of 3
DRAWING #:		
DD.V1K.FR1.FNL.01		

UNITS: IN[mm] SCALE: BY VIEW